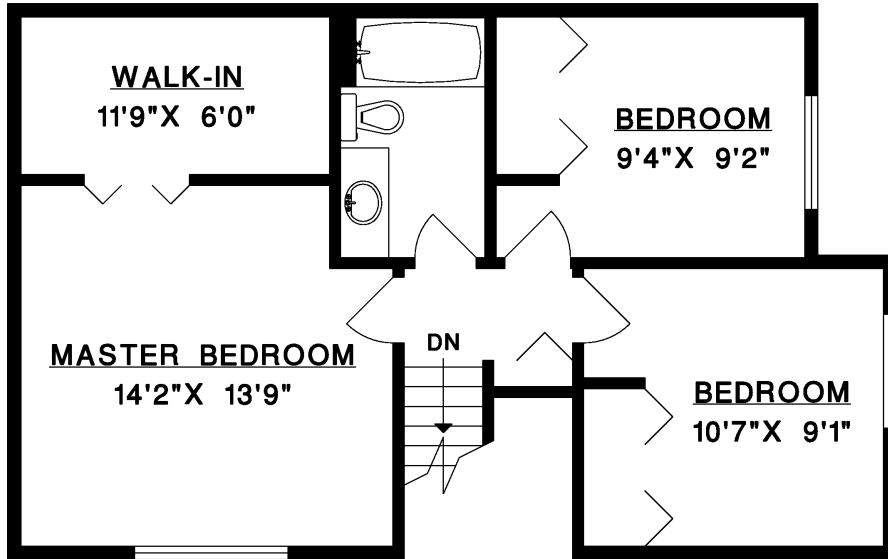


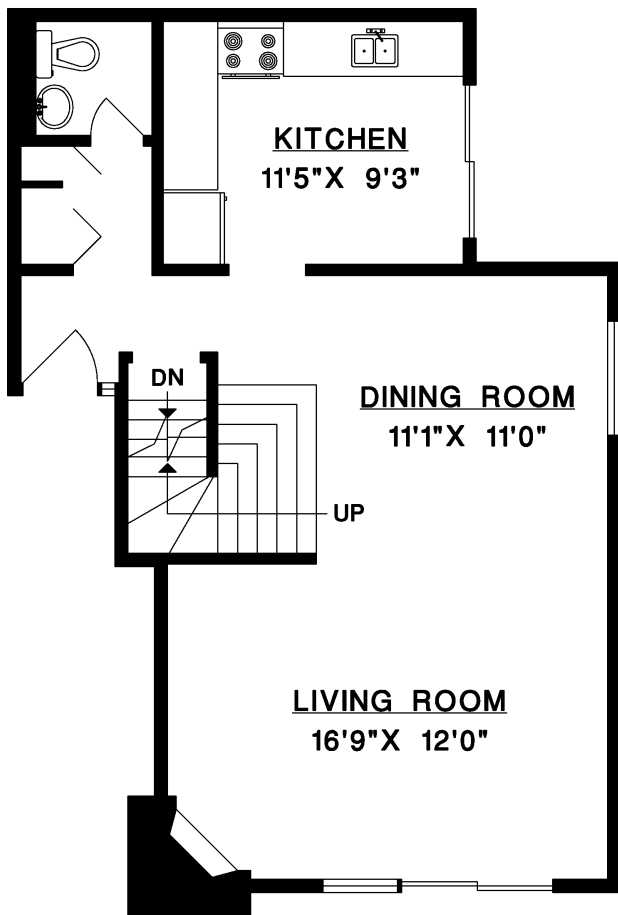


#302 - 4001 MOUNT SEYMOUR PARKWAY  
NORTH VANCOUVER

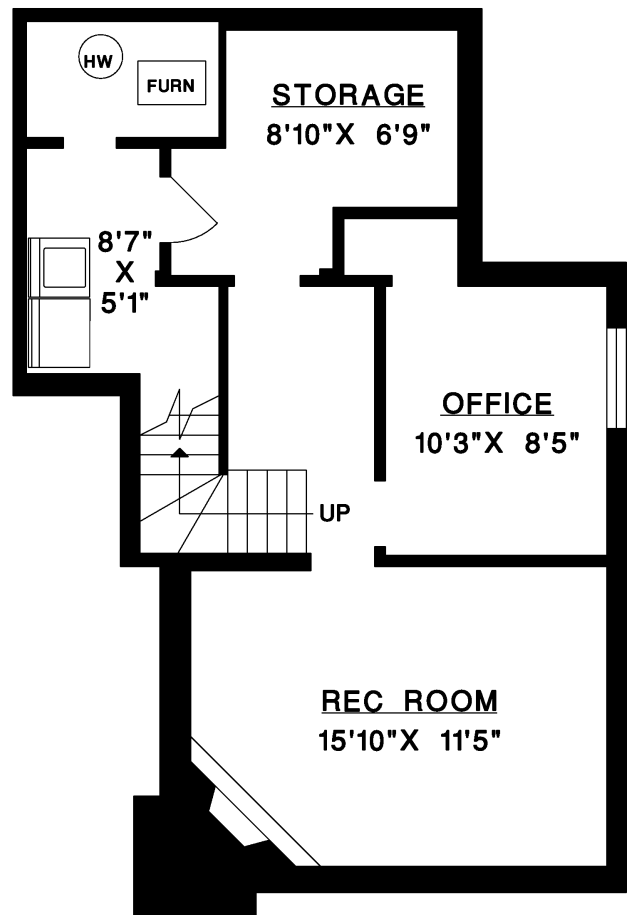
MAIN FLOOR	609 SQ.FT.
UPPER FLOOR	631 SQ.FT.
LOWER FLOOR	593 SQ.FT.
<b>TOTAL</b>	<b>1,833 SQ.FT.</b>



**UPPER FLOOR**



**MAIN FLOOR**



**LOWER FLOOR**

